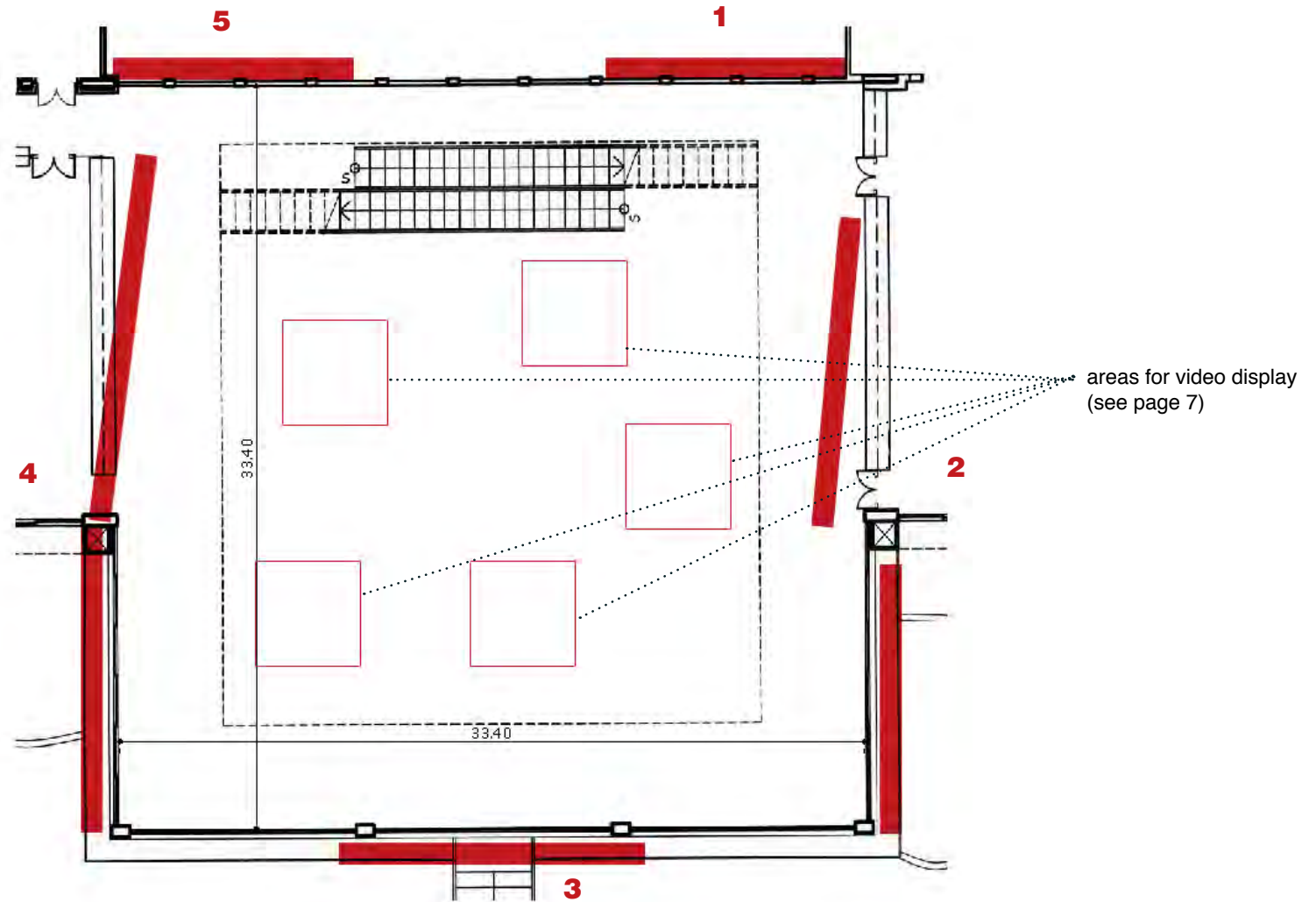
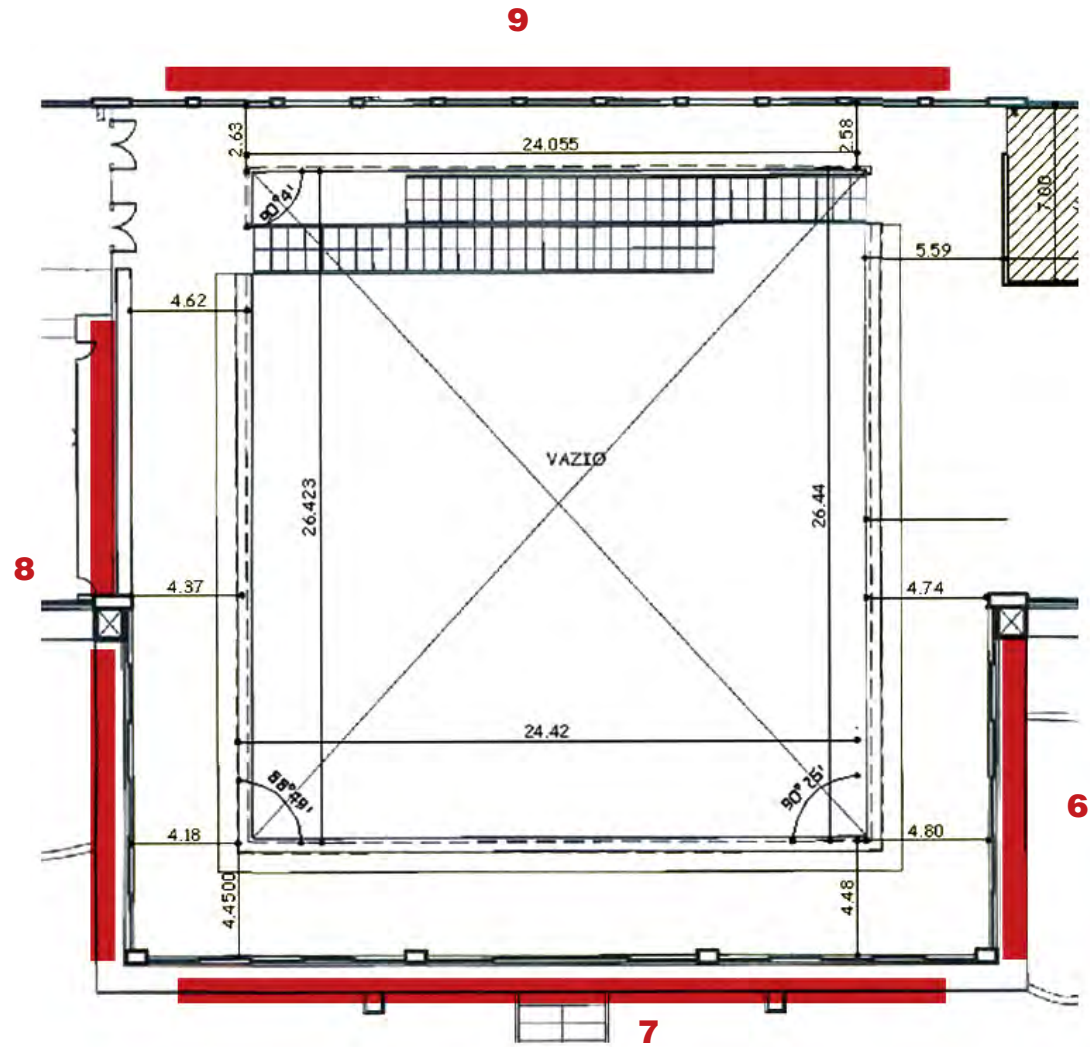




**Orimoto Tatsumi | MASP Museu de Arte de São Paulo | January-April 2008 > curator: Tereza de Arruda**

**Production: T.A. Art Projects | Assistant: Katia Sternel | Exhibition design: Tereza de Arruda, Fotini Lazaridou-Hatzigoga | Dezember 2007**







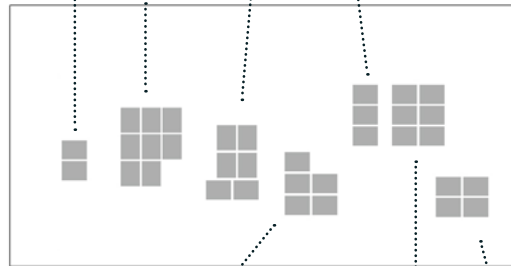
Two Bodies  
(1-2)



Event in the Cave  
(11-16)

My Body  
(3-10)

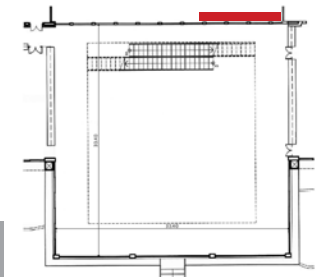
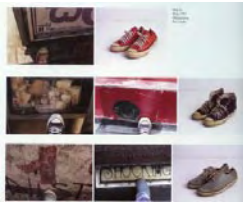
Step In May  
(22-24)

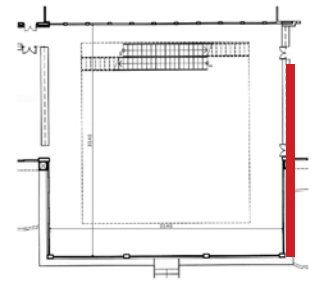
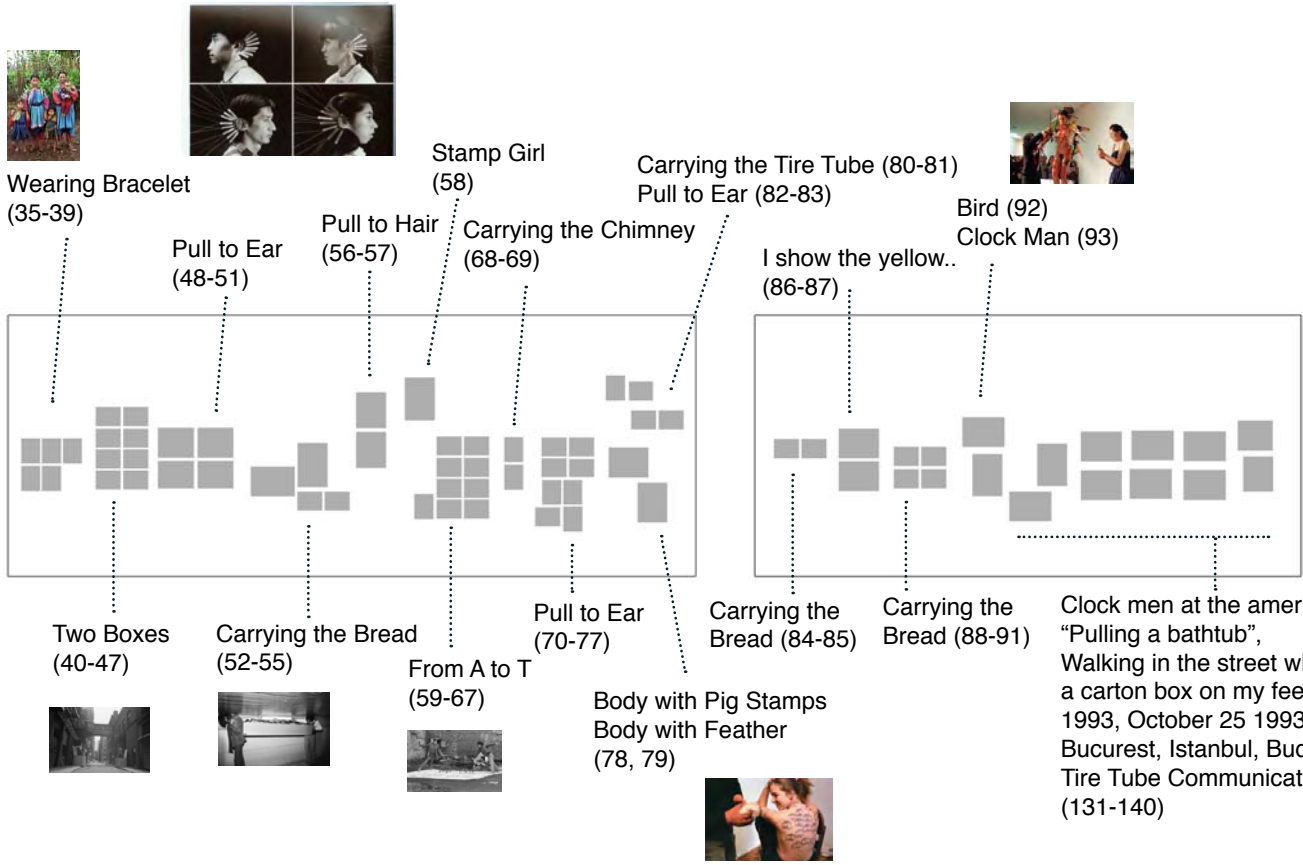


Step In  
(17-21)

The Barrel and shadow  
(25-30)

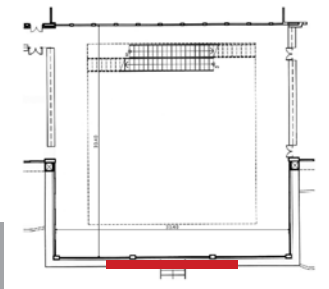
Snapshot of my Foot  
(31-34)

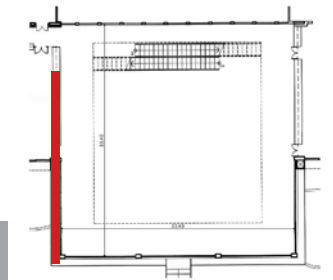
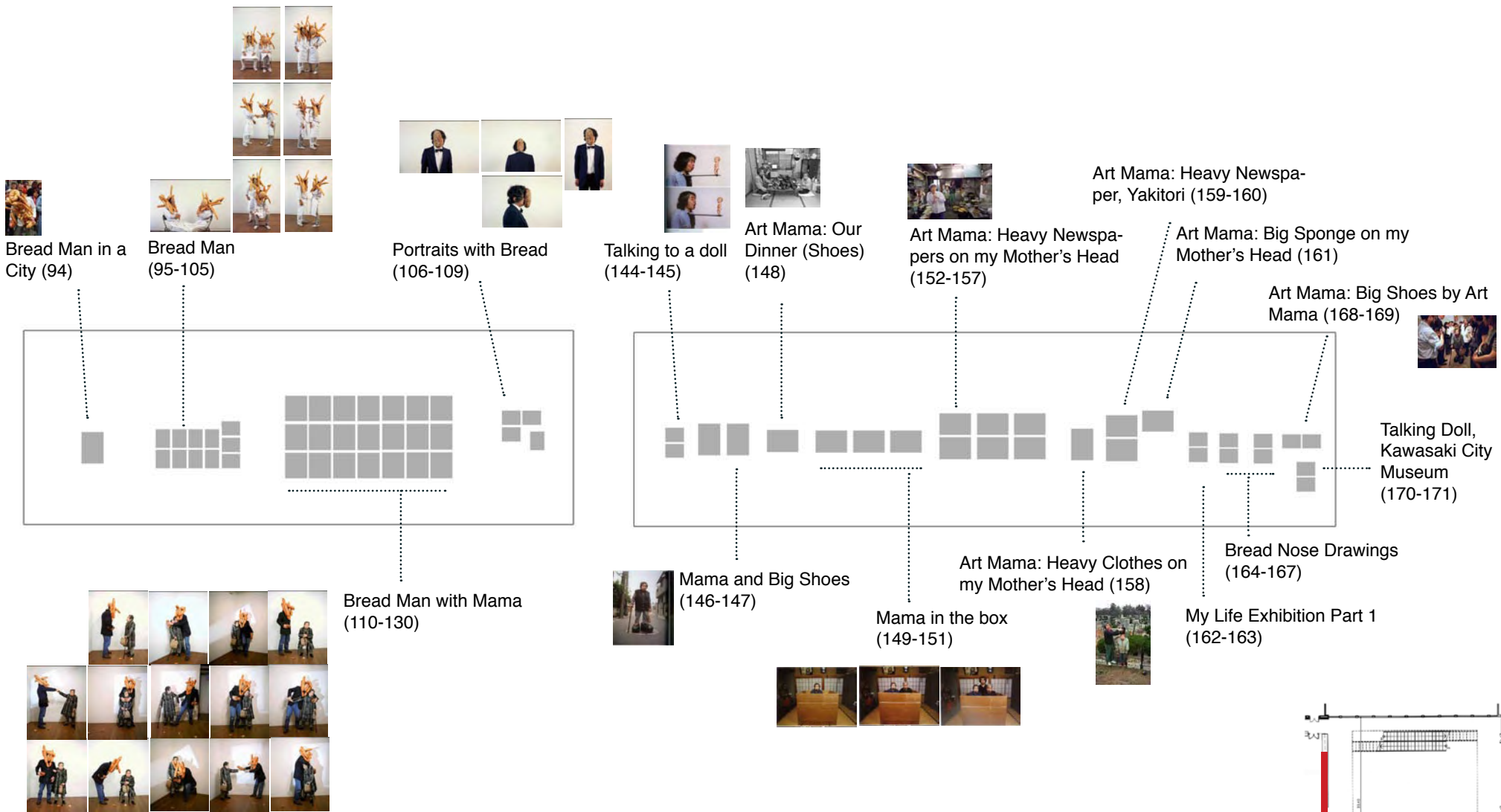






Tire Tube Communication  
(141-143)







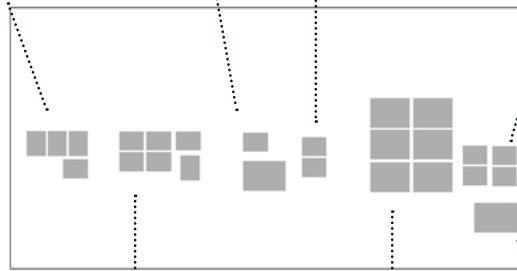
Art + Medical Care: Collaboration Art Work with Mental Obstacle Person (186)  
 Art + Medical Care: Three Sick Performance Artists (187)



Boxing Partner with Boys (196-197)  
 Boxing Partner with Girls (198-199)

Art Medical Center Akita (176-179)

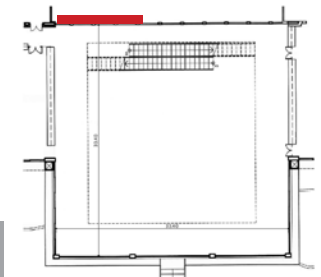
Talking to Art Mama Doll Kawasaki (188-189)



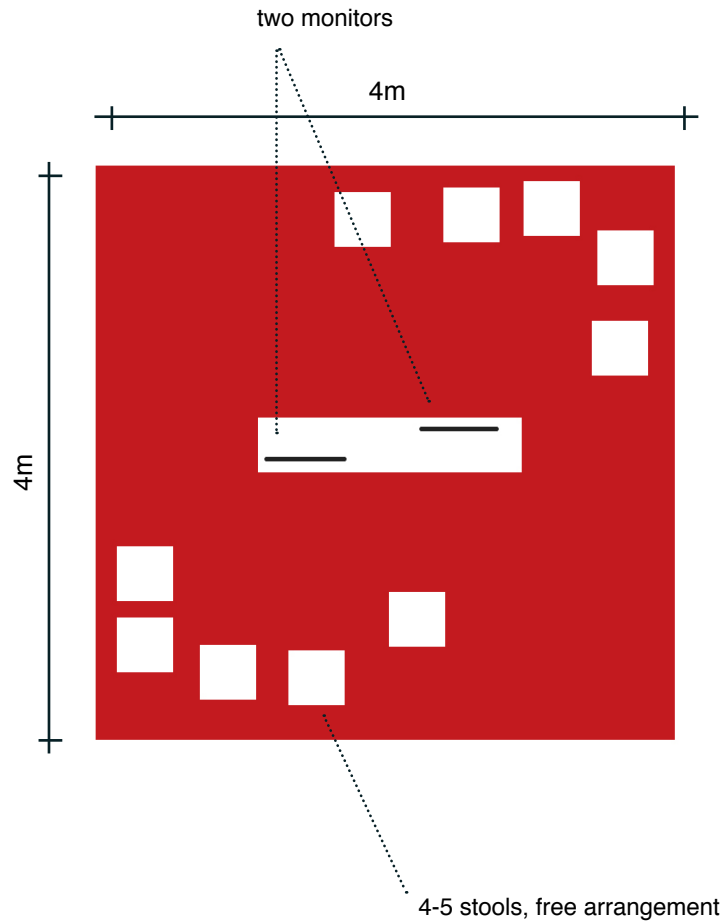
Art + Medical Care: Collaboration Work with Sick Person (180-185)

Boxing Partner (190-195)

Boxing Partner DNA Berlin (200)



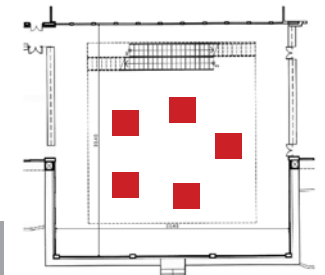


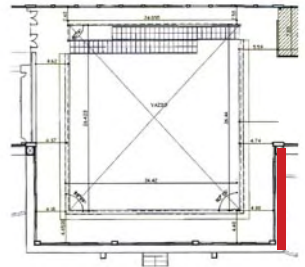
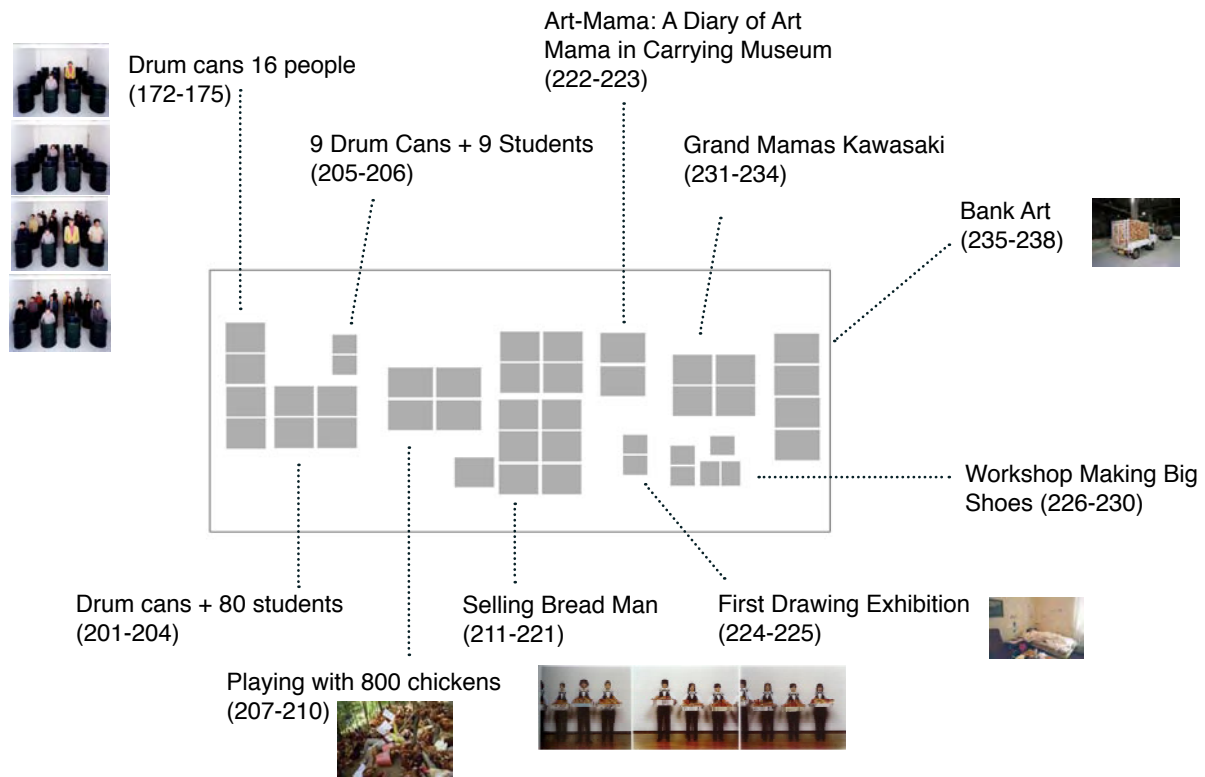


5 areas, each with 2 monitors

10 of following films will be shown:

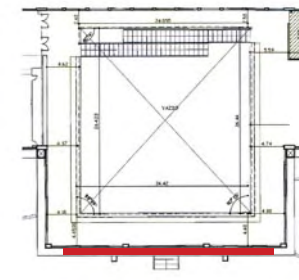
- \_NHK TV program about the life of mama and me
- \_Punishment
- \_Dram can and Tokyo
- \_50 Grandmamas at Kawasaki City Museum
- \_Boxing Partner at Tokyo
- \_Bread-man Performances 1991-1995
- \_Bread-man Performances Venice Bienal
- \_Bread-man Performances Belfirst, UK
- \_Bread-man Performances Sao Paulo Biennial 2002
- \_Bread-man Performances Baltic, UK
- \_Bread-man Performances Nagasaki, Japan Performance-Tape
- \_Bread-man Performances, Selfridge Dept. London
- \_Bread-man Performances, U.A.E
- \_Bread-man Performances, Yokohoma Triennial, Japan
- \_Bread-Nose Drawing
- \_Art Mama (TTC, BS)
- \_Playing with 800 of Chicken







Bread men performances  
(821-1320)

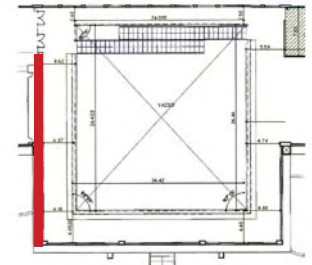
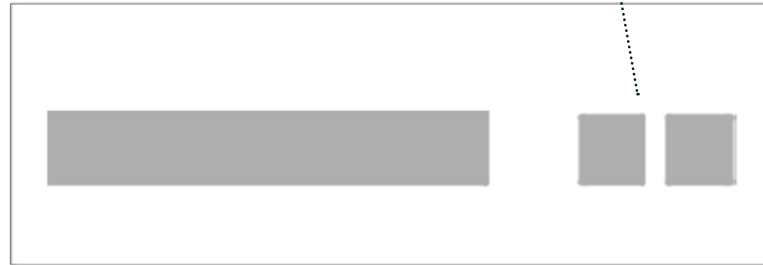




Art mama diary  
(220-519)



Passport photo box  
(520-719)





Text

Framed drawings  
(720-819)

